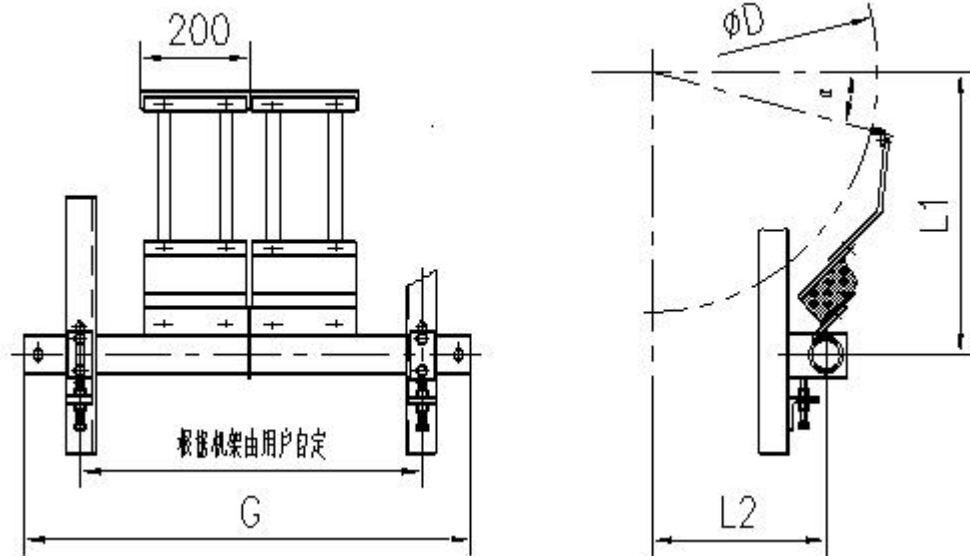
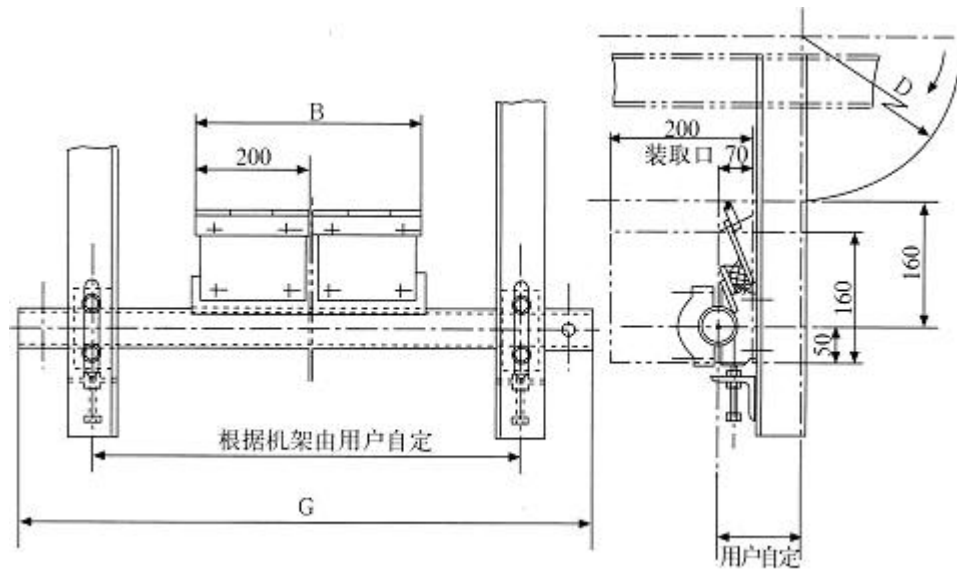


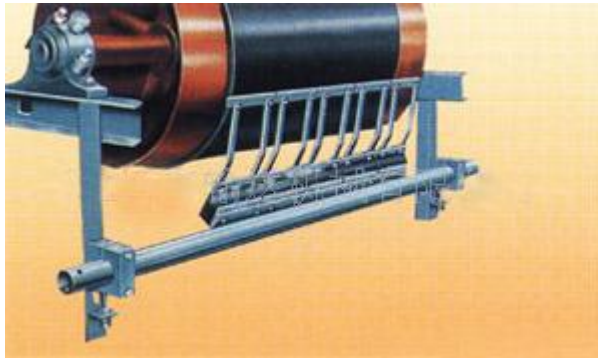
DT Alloy Cleaner

H Model (G size is customized.)



P Model (G size is customized.)





The DT alloy cleaner is in contact with the belt with an alloy scraper that removes the adhering material. There is a rubber under alloy scraper with a buffer function. Alloy cleaners are still the main belt cleaner in the market.

The cleaner has the characteristics of high wear resistance, good cleaning effect and long service life. It is widely used in large industrial enterprises with conveyor equipment such as conveyor industry, ports, power plants and coal handling enterprises.

The alloy cleaner has H, P, N, O, I, TQI model, and suit for BW 500mm~2200mm.

H model Cleaner is a head cleaner that is mounted next to the head pulley and has a tangent point of 5-15 degrees from the horizontal line of the center of the head pulley. It is used to remove the adhesive material from the belt above the head pulley.

P model Cleaner is head second step cleaner that installed at the smooth working surface below the head pulley. It is used to remove adhering material from the belt under the head pulley. H and P model Cleaner are usually used together.

N model Cleaner (Reversible) is installed on the smooth working surface of the reversible conveyor and can be used for cleaning any position on the conveyor belt.

O model Cleaner (Non-loaded) is installed at the non-working surface of the head and the tail pulleys. It is used to remove adhering material from the non-working surface.

I model Cleaner (Non-loaded, Reversible) is installed on the non-working surface of the head and tail of the reversible conveyor. It is used to remove adhering material from the non-working surface.